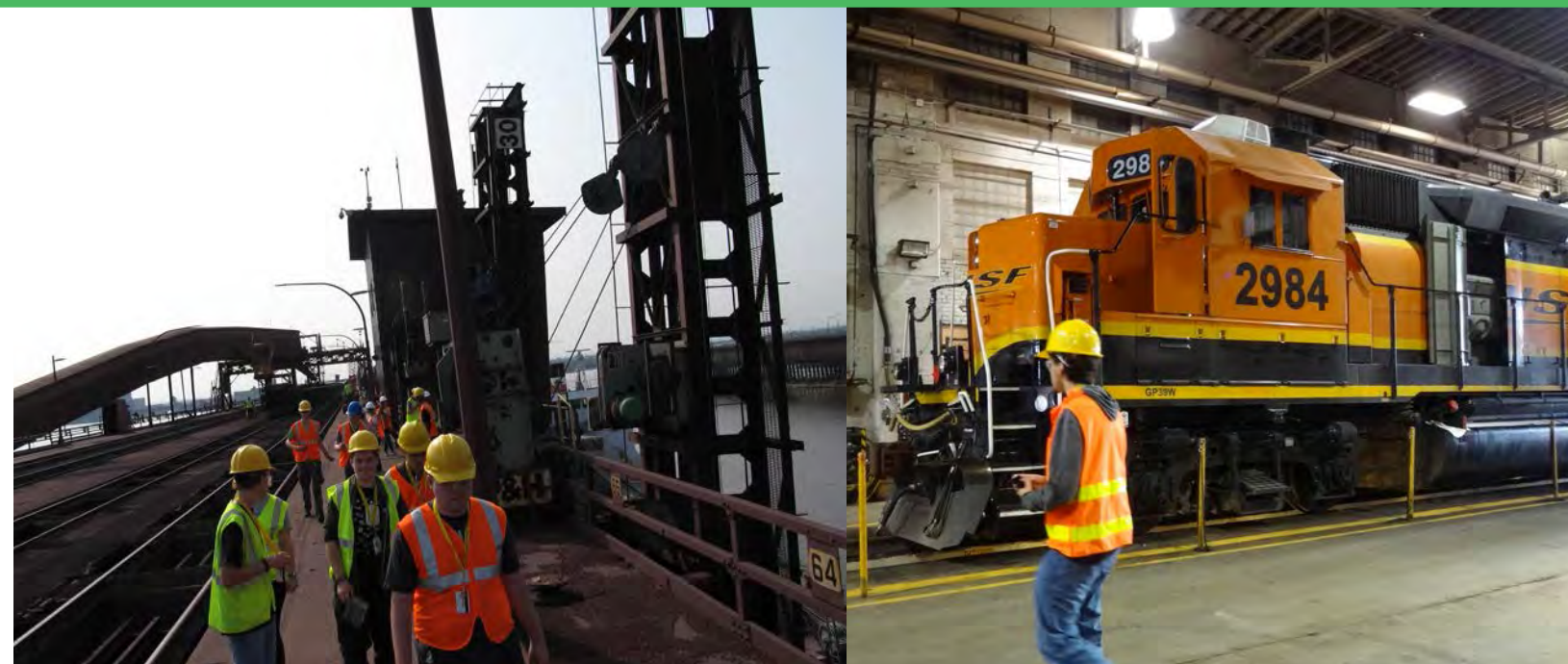


# 6TH ANNUAL SUMMER YOUTH PROGRAM

## RAIL & INTERMODAL TRANSPORTATION

JULY 26 TO  
AUGUST 1, 2015



### PLEASE JOIN US FOR A FANTASTIC WEEKLONG EXPLORATION!

Rail and Intermodal Transportation Explorations all week long! Hands on and classroom activities. Explore how ballast affects rail stability! Operate a computer locomotive simulator! Investigate logistics management operations! Classroom and field trip experiences in Michigan, Wisconsin and Minnesota! .

SPACE IS LIMITED, SO SIGN UP EARLY!  
APPLICATION DEADLINE IS MAY 2  
FULL SCHOLARSHIPS PROVIDED!

Information and applications available at Michigan Tech Summer Youth Program site:  
[HTTP://WWW.SYP.MTU.EDU/COURSES-SCHOLARSHIP.PHP](http://www.syp.mtu.edu/courses-scholarship.php)

**[GRADES 9 -11]**



PAST FIELD VISITS HAVE INCLUDED:

- BNSF** - Railyards, freight dispatch center, car and locomotive shop
- LS&I Railroad** - Locomotive shop, open pit mine activity, ore dock and yard facilities
- Halvor Lines** - Freight dispatch center, truck maintenance shop, truck driving simulator, truck cab experience
- CN** - Ore dock, interface between rail and marine transportation systems ... 80 feet above the water level!
- North Shore Scenic Railroad** - Train ride and visit to the best railroad museum in the midwest

QUESTIONS? CONTACT US:

**David Nelson**, [dannelso@mtu.edu](mailto:dannelso@mtu.edu),  
906-487-1734;

or Please Visit: [http://www.rail.mtu.edu/summer\\_youth.html](http://www.rail.mtu.edu/summer_youth.html)

**HOSTED BY:**



**Rail Transportation Program**  
Michigan Tech Transportation Institute • Michigan Technological University



**PROGRAM SPONSORS:**

